

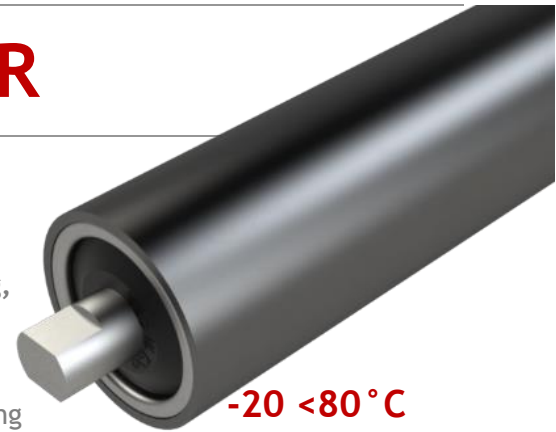
IR5500 SERIES - REGULAR

Bulk Handling Conveyor Rollers

The IR 5500 series is specifically for Bulk Handling mining, manufacturing, construction, and many others.

They are engineered to withstand heavy loads, harsh environments, and extreme temperatures, making them suitable for even the most challenging applications.

Also IR 5500 SERIES are a perfect solution for heavy-duty industrial applications where robust (min. 3mm wall tubes) with welded bearing housing offer significant higher load capacity to unit handling conveyor rollers. At our company, we understand that every application is unique, and that's why we offer made-to-measure rollers to suit your specific needs.



-20 < 80°C



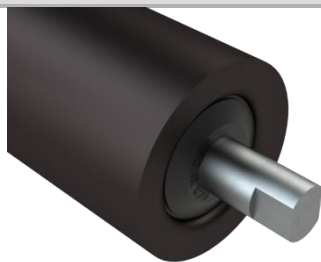
APPLICATIONS

Recycling Plants Offshore / Ships
Airports Quarries

Extra Heavy Duty Steel Construction Conveyors

| Roller Type | Tube Dia (mm) & thickness | Axle Options (mm) | Tube Finish Options. |
|-------------|---------------------------|-------------------|---|
| | | ● | Default self-colour. BZP & painted are optional extra |
| IR51 | 50.8 x3.0 | 20 25 | Self Colour BZP |
| IR60 | 60 x3 | 20 | Self Colour BZP Spray Black |
| IR63 | 63.5 x3.0 | 20 25 | Self Colour BZP Spray Black |
| IR70 | 70 x3.0 | 20 | Self Colour BZP Spray Black |
| IR76 | 76 x3.0 | 20 25 | Self Colour BZP Spray Black |
| IR803 | 80 x3.0 | 20 | Self Colour BZP Spray Black |
| IR89 | 89 x3.0 | 20 25 | Self Colour BZP Spray Black |
| IR4 | 101.6 x3.0 | 20 25 | Self Colour BZP Spray Black |
| IR108 | 108 x3.0 | 20 25 30 | Self Colour BZP Spray Black |
| IR127 | 127 x3.0 | 25 30 | Self Colour BZP Spray Black |
| IR133 | 133 x3.6 | 25 30 | Self Colour Spray Black |
| IR6HD9 | 140 x9.0 | 25 30 | Self Colour Spray Black |
| IR159 | 159 x4.5 | 30 35 40 | Self Colour Spray Black |
| IR168 | 168 x6.0 | 35 | Self Colour Spray Black |

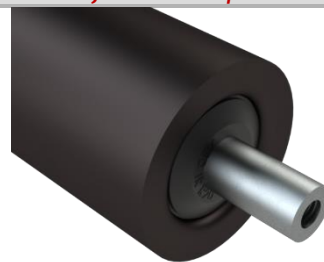
Most Popular Axle Finish Options
ask a member of the AED team for more options



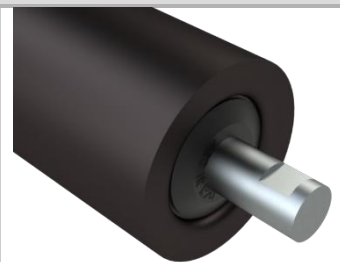
Flatted



Male Thread



Female Thread



U Bolt

BEST SELLER: IR89-20-AX2 (FLATTED)

Not what you're looking for? Try our "IR Wing Series"

IR5500 SERIES - REGULAR

| Roller Diameter | Min. Face length | Max. Face length |
|-----------------|------------------|------------------|
| Ø51 <Ø63.50 | 100 | 2000 |
| Ø70 <Ø80 | 100 | 2100 |
| Ø89 <Ø133 | 150 | 2400 |
| Ø139 and above | 150 | 2100 |

Options

- Chain drive - single, double simple & duplex
- Pallet guide discs
- Rubber Covering
- Painted finish
- Zinc plated tube
- Stainless internal bearings

| Roller Diameter | Min. Face | Max. Face |
|-----------------|-----------|-----------|
| Ø51 <Ø63.50 | 100 | 2000 |
| Ø70 <Ø80 | 100 | 2100 |
| Ø89 <Ø133 | 150 | 2400 |
| Ø139 and above | 150 | 2100 |

| CONV WIDTH | 51DIA | 63.5DIA | 70DIA | 89DIA | 89DIA/25 | 102DIA | 102DIA | 108DIA | 108DIA/25 | 127DIA /25 | 133DIA | |
|------------|-------|---------|--------|-------|----------|--------|--------|--------|-----------|------------|--------|-----|
| ROLLER B/B | 60DIA | | <80DIA | | | /25 | /20 | /25 | | | | |
| 200+ | 660 | 500 | - | - | - | - | - | - | - | - | - | - |
| 750 | 760 | 450 | 500 | 550 | - | - | - | - | - | - | - | - |
| 900 | 990 | 393 | 450 | 500 | - | - | - | - | - | - | - | - |
| 1000 | 1090 | 380 | 393 | 450 | 650 | 800 | 800 | 800 | - | - | - | - |
| 1100 | 1190 | 370 | 380 | 393 | 560 | 650 | 650 | 650 | 650 | 800 | - | - |
| 1200 | 1290 | 250 | 370 | 380 | 500 | 550 | 600 | 600 | 550 | 650 | 800 | - |
| 1300 | 1390 | 220 | 250 | 370 | 340 | 340 | 550 | 550 | 440 | 600 | 700 | 800 |
| 1400 | 1490 | 155 | 220 | 250 | 230 | 230 | 333 | 333 | 300 | 550 | 650 | 650 |
| 1500 | 1590 | 107 | 155 | 220 | 230 | 230 | 230 | 230 | 230 | 333 | 598 | 598 |
| 1600 | 1690 | 80 | 107 | 155 | 155 | 155 | 194 | 194 | 194 | 230 | 360 | 360 |
| 1700 | 1790 | 60 | 80 | 107 | 138 | 138 | 170 | 170 | 170 | 194 | 270 | 270 |
| 1800 | 1890 | 50 | 60 | 80 | 125 | 125 | 138 | 138 | 138 | 170 | 177 | 177 |
| 1900 | 1990 | 35 | 50 | 60 | 125 | 125 | 125 | 125 | 125 | 138 | 150 | 150 |
| 2000 | 2090 | 30 | 35 | 50 | 110 | 110 | 110 | 110 | 110 | 110 | 125 | 125 |

Products/size range not shown would have load capacity based on application

IR5500 SERIES - REGULAR

AED Rollers

Best rollers Best service

sales@aedrollers.co.uk | +44 (0) 1384 77427

TRANSOME • IMPACT • WING

Roller Order Form

| | | | | | | | | |
|-------------------|--|------|-----------|----------------|--|-----|---------------|--|
| DATE: | | QTY: | | IMPACT RINGS | | 108 | EXTRA DETAIL: | |
| | | | | | | 133 | | |
| | | | | | | 150 | | |
| Roller Dimensions | | | Axle Type | | | | | |
| A | | | | | | | | |
| B | | E | | | | | | |
| C | | F | | | | | | |
| D | | G | | | | | | |
| TYPE 2 | | | | TYPE 7 | | | | |
| | | | | | | | | |
| TYPE 3 | | | | TYPE 8 | | | | |
| | | | | | | | | |
| TYPE 4 | | | | TYPE 10 | | | | |
| | | | | | | | | |
| TYPE 5 | | | | TYPE 14 | | | | |
| | | | | | | | | |